

Operational Risk Management

FACULTY PROFILES



Beth Armstrong

Manager, Global Operational Risk Management

Manulife

Beth Armstrong is an operational risk professional in the financial services space who believes that there's too much excitement in risk management to not share it with others. Building approachable, comprehensible risk programs that fuel collaboration is a key passion of hers. She is currently employed at Manulife Financial in the Global Operational Risk Management team and has obtained her MBA with a specialization in Business Analytics. Beth has extensive experience in banking, financial services, and insurance (life, property, casualty and auto).

Sachin Baviskar

Senior Manager, Enterprise Risk Services

Ernst & Young LLP

Sachin Baviskar is a Senior Manager in the Financial Service Risk Management practice of Ernst & Young. Prior to that he worked with a large multinational professional services company in its Enterprise Risk Advisory practice. Through his past experiences and working at EY, he has over ten years of experience in assisting financial services firms in establishing / enhancing their risk management frameworks, focusing on model risk, operational risk and internal controls. He is also currently involved in developing the AI governance solutions, as part of EY's digitization of risk strategy.

Elsbeth Bowler

Managing Director, Operational Risk Division

Office of the Superintendent of Financial Institutions (OSFI)

Elsbeth has over 35 years of experience in the financial services industry. She joined OSFI in 2012 in the Life Insurance Group and is currently the Managing Director of the Operational Risk Division which is part of the Non-Financial Risk Group. Prior to OSFI, Elspeth held positions in reporting, planning, financial initiatives and capital at several large and medium-sized insurance companies.

Elsbeth has a B.Sc. from McGill University and an MBA from the Ivey School of Business and has a CPA,CGA.

FACULTY PROFILES



Corina Farbacher

Chief Governance and Risk Officer, Corporate Secretary

Affinity Credit Union

Corina Farbacher brings more than 20 years of extensive legal, governance, risk and leadership expertise to her role of Chief Governance and Risk Officer with Affinity Credit Union. She holds an undergraduate degree in the social sciences and a Bachelor of Law degrees from the University of Saskatchewan as well as an Institute of Corporate Directors, Director (ICD.D) designation from the Institute of Corporate Directors. Corina received her MBA from Queen's University after being recognized as a recipient of the 30% Club Scholarship awarded to one woman entering the program who has demonstrated exceptional academic excellence and leadership. A life-long learning, is currently completing a Masters Certificate in Enterprise Risk Management from Schulich School of Business, York University. As Chief Risk Officer, Corina integrates risk management in a way that is accepted and valued for its contribution an organization's success. Her vision is that, through conversation and understandable narrative, the risk function can help Affinity achieve the accountability necessary to meet regulatory expectations, keep members' assets safe and enable informed and intelligent decisions necessary to achieve an organizations objectives. With extensive governance experience gained from sitting on boards as well as through holding executive positions which include General Counsel and Corporate Secretary at an FRFI, Corina draws on her experience to ensure that risk management is discussed and communicated in meaningful ways at all levels of the company.

Corina is known as a transformational and visionary leader with a focus on governance, strategy and its execution, organizational change and developing leaders of the future. Success means seeking out expertise, recognizing aptitude, building on strengths and embracing humanity. It also means living a purposeful life, dedicated to family and personal and professional well-being. Corina gives back to her community with her core values of integrity, caring and achievement through involvement with boards and committees with both provincial and national scope, most recently with the League Savings and Mortgage Board of Directors in Halifax, Nova Scotia.



Sameer Lal

Associate Director, Operational Risk

RBC

FACULTY PROFILES

Alexandra Lee

Executive Director, Learning Labs

Ernst & Young LLP

Alexandra Lee is an Executive Director in the People Advisory Services practice of Ernst & Young LLP in Toronto. With over 21 years of consulting experience, Alexandra is a seasoned change management practitioner with deep experience leading client engagements from strategy and planning through to delivery. Alexandra helps organizations envision their future, operationalize strategy and transform. Key areas of expertise include change management, training and communications, organization structure design, and workforce transition.

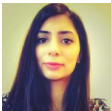


Katherine Macpherson

Associate Partner, Canadian Operational Risk and Resilience Leader

Ernst & Young LLP

Katherine is an Associate Partner in the Financial Services Advisory practice of Ernst & Young. She leads the Operational Risk and Resilience practice in Canada, specializing in risk strategy and innovation. With over 22 years of operational risk experience that includes roles in the banking and insurance industries and 13 years at the Office of the Superintendent of Financial Institutions (OSFI), Katherine brings a deep and practical understanding of the regulatory landscape and industry leading practices.



Naveen (Hossain) Maher

Global Senior Compliance Consultant

Sionic

I have worked within the financial services sector, specialising in regulatory compliance for over ten years. As a former CCO of a global schedule two bank and investment firm, I have front to back knowledge across multiple regulatory regimes, registration classes, and asset classes. I deliver regulatory efficiency and transformation through program assessments, re-design, remediation, and reporting.

I pride myself in cultivating relationships, working collaboratively with stakeholders at all levels to unblock issues and deliver successful, timely outcomes which enable clients to achieve their goals. I advocate for consumer protection, and I am dedicated to preserving and protecting the financial system.

FACULTY PROFILES



Mandeep Mangat

Chief Control Officer

HSBC Bank Canada

Mandeep Mangat is an experienced professional and leader in operational risk and controls, enterprise risk, compliance and assurance. She has worked in major corporations in Canada and gained valuable industry experience over the last 25 years.

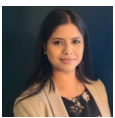
When not working or being a mom to two amazing boys, Mandeep enjoys the breathtaking beauty of nature offered by Vancouver. She also enjoys traveling and can't wait to start exploring our wonderful world again post these temporary halts over the last couple of years.

Pranathi Praveen

Senior Manager, Financial Services Consulting

Ernst & Young LLP

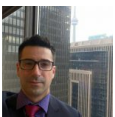
Pranathi Praveen is a Senior Manager in the Financial Services Advisory practice of Ernst & Young LLP in London. With over 7 years of experience at EY in BCM, Pranathi has led various client engagements through re-design, development and innovative delivery. Pranathi has enhanced and developed various risk management programs across global banks providing key insight on building new frameworks, processes and procedures. She is a passionate leader recognized for being a continuous changemaker.



Amala Selvaraj

Senior Vice President, Internal Audit QA - Risk, Treasury, & Finance

Citibank



Isaac De Souza

Artificial Intelligence & Emerging Technology Risk Officer

BMO Financial Group

Isaac De Souza leads BMO's 2nd line's risk oversight and effective challenge of AI and Emerging Technologies, while establishing a foundation for AI & Emerging Technology risk management processes. Isaac has an extensive technical background and business experience from start-ups in Silicon Valley to big tech in Canada deploying cutting edge tech before joining BMO.